

INTRODUCTION

We warmly welcome you to the Faculty of Livestock, Fisheries & Nutrition of the Wayamba University of Sri Lanka (WUSL) which has a record of outstanding academic achievement for over 18 years. You can be very proud because you have registered in the faculty that produces highly employable graduates with strong background and interpersonal skills. The two major aspects of our degree programmes are: the unique combination of courses from all major and emerging areas related to Food and Nutrition sector and producing graduates with the knowledge and skills to satisfy best industrial needs by both degree programmes.

This guide will facilitate your arrangements for coming to Wayamba University of Sri Lanka. You may have some questions not fully answered here. You may contact the persons given inside the cover page of this guide if you need further help or if you encounter any difficulties. Further information concerning your academic programme and University life will be given later when you join the academic programme of the faculty.

REGISTRATION

We are pleased to hear that you have already registered at the UGC and faculty level registration for the degree programme that you have been selected for and collecting your information and compiling your certificates will be undertaken by the staff of the Faculty of Livestock, Fisheries & Nutrition of Wayamba University of Sri Lanka after the formal session of the inauguration ceremony.

STUDY PROGRAMMES

We offer two study programmes:

- BSc in Food Science & Nutrition
- BSc in Food Production & Technology Management

You will be given the Student Handbook and containing the details of the degree programmes during the orientation programme of Faculty. Basic

introduction regarding the degree programmes can be found in the UGC Handbook.

REACHING THE FACULTY OF LIVESTOCK FISHERIES AND NUTRITION

The faculty is located in the Nebombo - Kurunegala highway (bus route no 34) between Dankotuwa (12 km) and Pannala (4km).

INAUGURATION & ORIENTATION PROGRAMME

The Pre-Academic Programme (orientation programme) will be commenced on **23rd January 2019**. A printed Academic Guide with all the details of the academic programme for Students will be distributed to all new students during orientation programme.

ENGLISH PLACEMENT TEST

English placement test (written) will be conducted on the first day of commencing the pre academic session to assess the English language proficiency of the new students. Based on your marks obtained at the test, you will be grouped and receive an intensive English language training Programme to enhance your language skill to follow your studies at the best.

PRE-ACADEMIC PROGRAMME

The Faculty has organized a pre-academic programme which includes;

- Intensive English Programme - An Intensive English language programme will be conducted for nearly 5 weeks to improve the language skills of the new entrants.
- Computer and IT Awareness Programme - Computer awareness programme will be conducted to enhance the new entrants' skills of IT.
- Orientation Programme - Orientation programme is intended to provide you with an opportunity to learn about the University and about aspects of the *Wayamba way of life* before your course begins.

Activities to be conducted....

- Outbound Training
- Special lectures and discussions
- Interactive sessions with staff and senior students
- Skill development programmes conducted by Career Guidance Unit
- Socio-cultural events
- Entertainment and video shows

Details of the Pre-academic programme will be given at the inauguration.

Unless you are specifically exempted, you will be expected to attend all activities during the orientation programme.

ACADEMIC PROGRAMME

The Faculty will commence the first semester of the academic programme on **18th February 2019**.

PROFICIENCY IN ENGLISH

You English proficiency will be exceptionally helpful for you to follow the course successfully. To keep up your confidence, if you require further improvement of your English skills, the faculty offers Intensive English programme that enhances your English language skills to a suitable standard in short period. Department of English Language Teaching (DELT) of the University has long experience in teaching English to new comers. Intensive English programme provides English lessons, together with appropriate study skills, for new comers. If you still need further improvement English skills, we may ask you to come for an extended period of English lessons during the first semester of your course.

ACCOMMODATION

WUSL as a policy provides residential facilities to first year students only after the orientation programme. Please fill the application form on the

day of registration and hand over to the Faculty Office. You will be informed regarding the availability of the halls of residence in advance or you may seek advice by telephoning Assistant Registrar at 031 – 2298111 during office hours.

You need to personally find accommodation during the orientation programme (2-3 weeks) till you get University accommodation. the University is pleased to help you find private accommodation. However, it is not possible to secure accommodation unless you come to Makandura to make arrangements with the landlords in person. You would therefore find it helpful if you could come to Makandura a few days before your course starts to look for private accommodation. We expect to provide some details of the accommodation available locally on the day of inauguration.

DRESS

There is no dress code set by the faculty and students are expected to dress attire suitable for the profession of your discipline. Students are expected to wear comfortable but decent clothes as they have to visit some outside organizations during the pre-academic sessions. All students are advised to bring a suitable costume for outdoor activities.

Male Students

- Light Color Shirt
- Suitable Trouser
- Shoes

(Should be clean- shaved)



Female Students

- Skirt or Frock (Should be cover the knees)
- Blouses (should have sleeves)
- Salwar

(Trousers not allowed)



STUDENT COUNSELLING

If you need support to adapt to new life at university and academic programme, counselling programme is there for your assistance. If you feel stressed, anxious, worried with workload, having problems of getting along with new community or feel risk of underachievement in your studies the counsellors of the faculty would be with you to support.

Counselling is available for supportive or problem-solving assistance for academic, vocational, emotional, personal or social concerns. Counsellors help explore these issues and assist students to work toward achieving the goals they have set for themselves. We propose you to make it a habit to meet a counsellor when you need. Most students can benefit from seeing a counsellor at some point in their university experience.

Our professional staff has experience in handling a variety of students with different backgrounds and situations. Get the contact details of the

counsellors, pass them to your parents/guardians too. Contact counsellors at any time:

Name & Designation	Office	Contact Number
Student Counsellor Dr. (Mrs). Krishanthi Premarathne	Department of Livestock & Avian Sciences	031-2299873
Student Counsellor Dr. KDPP Gunathilake	Department of Food Science and Technology	031-2299871

INFORMATION & COMMUNICATION TECHNOLOGY CENTRE (ICTC)

The ICTC is common to both faculties located at Makandura Premises of the Wayamba University. It is fully equipped with servers, workstations with multimedia facilities, Wi-Fi facility, Laptop Computers, Multimedia Projectors, UPS systems, Laser Printers, Colour Printers and Scanners. This Centre operates in 3 sections; separate room for the staff members, separate laboratory to conduct practical for students and a separate room with multimedia facilities

LIBRARY

The University Library provides access to Library and Information Service to support teaching, learning and research activities of the student and staff community by making books, e-resource and other materials available and by accessing user to be acquainted with skills in locating information deemed necessary in the modern information age.

CAFETERIA

The University Food Service is operated by outsourced Campus Dining Services and offers all major meals (breakfast, lunch and dinner) and a wide variety of snacks for the campus community. This is the most affordable dining option, but there are a variety of meal plans to cater to everyone depending on the affordability.

MARKET PLACE AND SHOPS

Marketplaces are located at Makandura (just 10-minutes' walk from the University) and also at Pannala (10-minutes bus ride). Several food stalls are located in nearby area of the premises. Pannala town has Food City, super market and many other shops. Makandura town has several small shops from which students can buy stationary and food items.

SPORTS & RECREATION

In addition to mastering the books performing in sports boosts your personality immensely. The university has the fully equipped gymnasium with all sorts of modern fitness equipment (at main campus) to eliminate your stress of work, keep fitness and burn your extra fat gathered during long hours of studies. You get ample outdoor play ground facilitates for dozens of sports including cricket, football, netball, badminton, etc.

HEALTH SERVICES

The Student Health Centre situated in the Makandura premises strives to remove health related barriers to learning, to promote optimal wellness, to enable students to make informed decisions about health issues, and to empower students to be self-directed and well informed health care consumers. University Medical Officer is available on every Tuesdays & Thursdays at the Health Centre. When the Medical Officer is not available or in an emergency, students can get health facilities from Sandalanka District Hospital located at the Makandura town (10 minutes' walk) or Dankotuwa (20 minutes' bus ride). The nearest major hospital is at Negombo (25 km from the University). Several Medical centres and private hospitals operated 24 are located in Pannala and Negombo.

BANKING FACILITIES

Banking facilities are available in following areas;

- ❖ *People's Bank – Makandura/ Pannala*
- ❖ *Bank of Ceylon – Makandura/ Pannala*
- ❖ *Commercial Bank – Pannala*
- ❖ *Sampath Bank – Pannala*
- ❖ *National Saving Bank – Pannala*

ATM – BOC – at the Lions Gate- (new entrance)

ATM – People's Bank - Makandura

POST OFFICE

This full-service facility is provided by the Makandura post office and accepts weighs packages, receives incoming mail and fax services for residential students through the University Common Support Unit.

UNIVERSITY SAFETY

University Security Service operates 24 hours and 365 days a year. You may consult the Marshal (the Chief of the University security service at an emergency on security issue.

PROHIBITION OF RAGGING & OTHER FORMS OF VIOLENCE

Any act which causes or is likely to cause physical or psychological injury, fear or mental pain in an undergraduate or a member of staff is called ragging and that is totally prohibited. Act No. 20 of 1998: Prohibition of Ragging and Other Forms of Violence in Educational Institutions makes ragging a distinct and punishable offence. Not only a person who commits ragging, but also those who participate in or undergo ragging are liable under the Act. Ragging can take place within or outside an educational institution.

PUNISHMENT FOR RAGGING

The punishment for ragging is two years' rigorous imprisonment. In addition, the court can award compensation to the victim. Where ragging leads to sexual harassment or grievous hurt, the punishment is increased to ten years' imprisonment and an award of compensation. The latter offence is generally non-bailable. In addition, the court can, depending on the gravity of the offence, order the expulsion of a student from an educational institution if that person is found guilty of any of the offences contained in the Act.

The staff members of the Faculty of Livestock, Fisheries & Nutrition have taken a unanimous decision to respond strongly against any undergraduate who engages in ragging. These undergraduates will be reported to the university authorities as well as the police and those who commit/support ragging will be expelled from the university. First year undergraduates are, therefore, urged to take a positive stand against ragging. Please join with the staff and the majority of undergraduates who reject this criminal conduct and help to eliminate ragging from the Faculty and the University.

If you have been forced/invited to undergo ragging (before or after coming to faculty) or if you get messages or telephone calls from any group including your batch mates to undergo ragging, immediately inform the Dean, Proctor, Deputy proctor, Assistant registrar or any other academic staff member. Please give the details of such persons if you know or give the telephone numbers if you get messages or calls. All the information you give will be taken care strictly confidential.

FACILITATION OF DIFFERENTLY-ABLED STUDENTS

The Faculty is ready to facilitate differently-abled students who are enrolled in the academic programme or become differently-abled during the period of enrolment. Faculty would provide facilities for them to progress smoothly through the teaching, learning and assessment programme. Students who need special assistance in academic and assessments should make a formal request to the Dean highlighting the type of support they require for the successful completion of academic work.

SUPPORT FOR TAMIL SPEAKING STUDENTS

A system to support non-Sinhala speaking students from North and east is available as audio books. Students may download these audio books (19mb) from the faculty web. The audio books provide most commonly used word language styles and words as an easy to follow dialog form (questions and answers).

GRIEVANCE REPORTING FACILITY

When you are registered and ready to start the academic programme, if you face any problem related to your academic matters, or if you have any personal difficulty (mental or physical), harassment or intimidation you may report your grievances by sending email to the following email of the faculty.

Faculty - SSLCFLN@gmail.com. All the information and messages you send to this email is considered very confidential and such information will be only handled by the Assistant Registrar and no information is send to a third-party.

In addition, you may contact any of the following persons for any support,

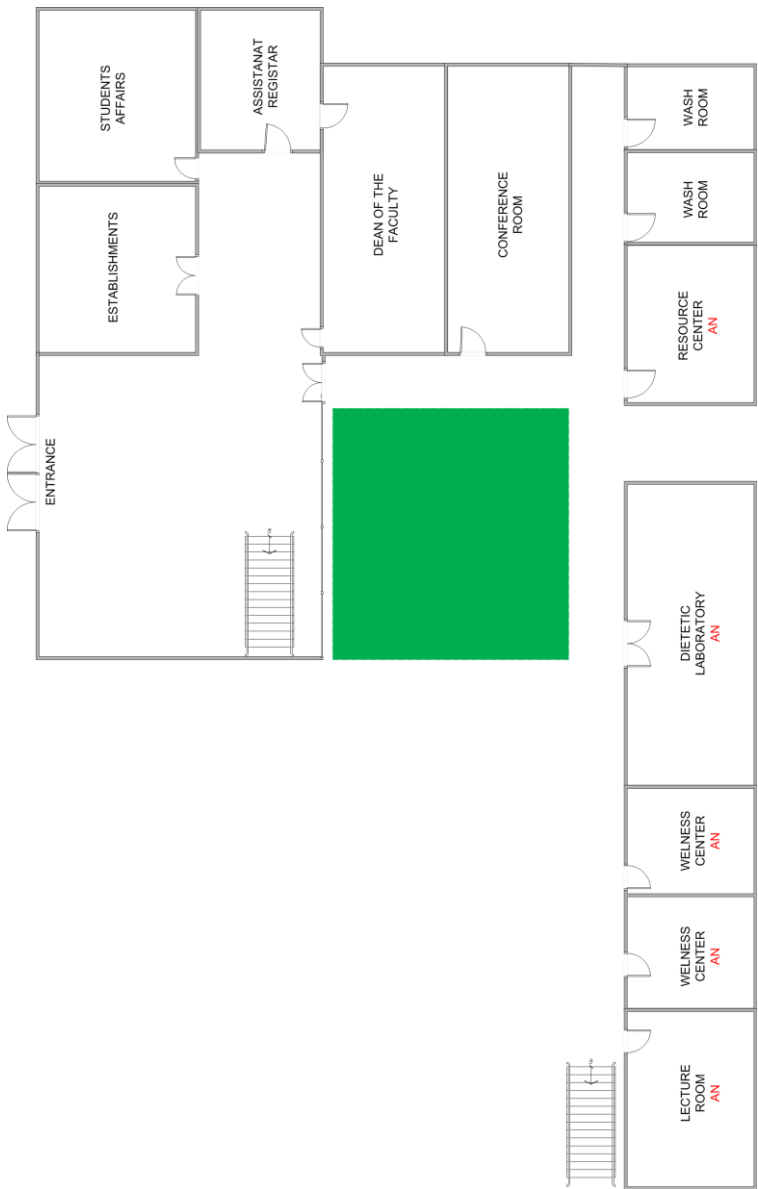
- Assistant Registrar, - Mrs. S.P.A.U. Senarath - 031 2299870
- Deputy proctor,
 - ❖ Dr. (Mrs) Harshi Gunawardena – 031 2299120
- Student counsellors
 - ❖ Dr. (Mrs) Krishanthi Premarathne – 031 2299873
 - ❖ Dr KDPP Gunathilake – 031 2299871

If you want to report about any harassment, you can directly report that to the web link of the University Grants Commission (UGC web portal) listed below.

UGC - www.ugc.ac.lk/rag/rg/ (This service is provided by the University Grants Commission (UGC). Students can fill an online application form with details such as complainant name, victim name, email, mobile number, university name, ragging details, etc. and submit it).

INFORMATION OF THE FACULTY AND THE PREMISES

Main building – Ground floor



Please find the following floor plans for you to conveniently locate offices, laboratories and lecture halls etc. in the faculty.

Main Building

1. Ground floor- Dean's office
2. 1st floor- Department of Aquaculture and Fisheries (AQF),
3. 2nd floor Department of Livestock and Avian Sciences (LAS),
4. 3rd floor Department of Food Science and Technology (FST).

Other buildings – next to main building

Applied Nutrition Building (NTN)

Old complex- Laboratories (AQF, FST and LAS)

1st floor- Department of Aquaculture and Fisheries (AQF):



2nd floor-Department of Livestock and Avian Sciences (LAS):**3rd floor Department of Food Science and Technology (FST):**